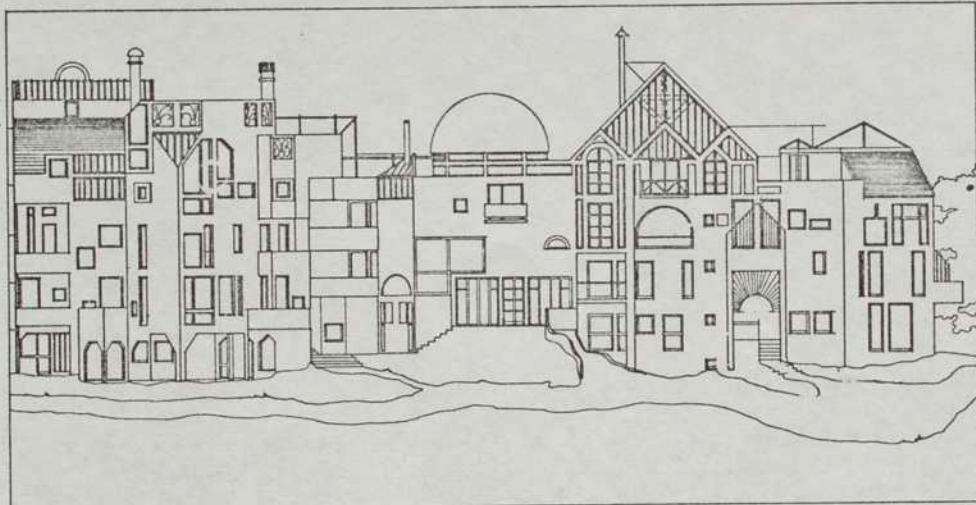


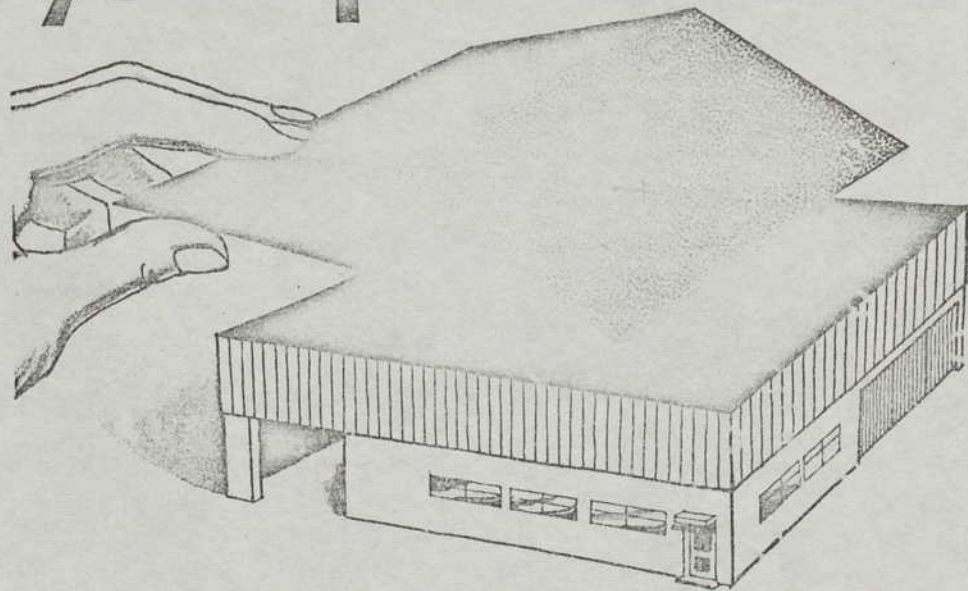
## News from Europe

## Paris looks to new urban approach



Housing collective from French group Arcos.

## Foamglas Tapered Roofing System fits your specification



The unique Foamglas Tapered Roofing System means you can introduce falls to a flat roof – without heavy wet screeding – and still retain all the benefits of Foamglas Cellular glass insulation.

Foamglas is dimensionally stable and cannot cause rucking or cracking of the roof covering through differential rates of thermal expansion. It is completely waterproof too, so the insulation value remains constant at all times – and its unique properties ensure that it will last the life of the building.

Foamglas has an amazingly low coefficient of thermal expansion – just  $8.5 \times 10^{-6}/^{\circ}\text{C}$  – and Foamglas WILL NOT BURN. It is light, easy to handle – yet, with its high compressive strength, tough enough for rooftop car parks. Being totally vapour proof, Foamglas needs no vapour barrier, and can eliminate condensation problems. To ensure compliance with Building Regulations, the 'K' value has been improved around 10%.

Foamglas Tapered Roofing System gives the double advantage of providing positive drainage and dispensing with heavy wet-screeding, thus cutting down on application time. A Foamglas Tapered Roofing System can be prefabricated to suit your needs. Foamglas gives you security, stability and superb insulation in roofs as well as cavity walls, tanks and pipework.

Ask for a site visit from a Foamglas expert – or send now for the full facts and the Agreement Certificate.

**FOAMGLAS**  
CELLULAR GLASS INSULATION

Pittsburgh Corning (United Kingdom) Ltd.  
4 St. James' Church, North Wall,  
The Green, Edinboro, (0223) 30941  
Tel: 01 907 9454 (lines 2230)

**pc**  
PITTSBURGH CORNING  
LIMITED  
EDINBORO

For instant information tick ☐ on reader inquiry card

Please send me the facts about Foamglas Cellular Glass Insulation  
My interest is: ☐ Flat roofs ☐ Pipe work ☐ Other applications ☐  
Name \_\_\_\_\_  
Company \_\_\_\_\_  
Address \_\_\_\_\_  
Telephone \_\_\_\_\_

THE 11th Paris Biennale arts exhibition focuses for the first time this year on architecture.

The exhibition has sought out young architects from 17 countries in an attempt to produce an alternative to "the great megalomaniac programmes which have, even recently, been disrupting entire areas and destroying our urban heritage."

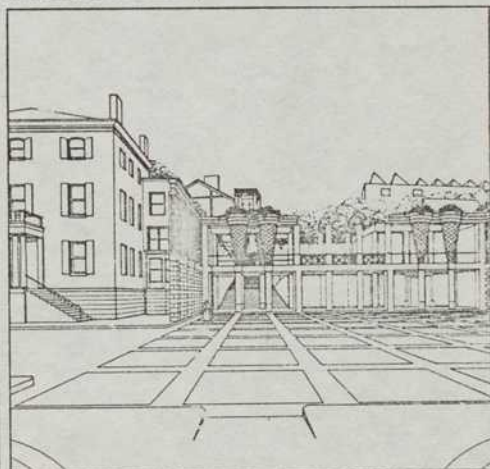
The exhibition is entitled *In Search of a New Urban Design Approach*. At Piano and Rogers' Pompidou Centre until November 10, it attempts to show that the rising generation of architects, sickened by the

excesses of the past, are "more modest, infinitely more respectful of the urban context into which they make their interventions...they are more realistic, more aware, more competent than their elders whose brutality has too often led to the mutilation of the town".

The organisers of the exhibition searched for young architects with a post-modern

By Odile Fillion

approach, defined in French as *urbanite*. They found 60 architects from the 17 countries, from the UK to Upper Volta.



Frazier Terrace, Rhode Island, by Jorge Silveira and Rodolfo Machado.



Rehabilitation on the perimeter and infill behind the abandoned 17th century buildings in Amsterdam – proposal from Steve White and Malcolm East from London.



French architect Yves Lion's scheme for a law centre fitting into existing townscape.